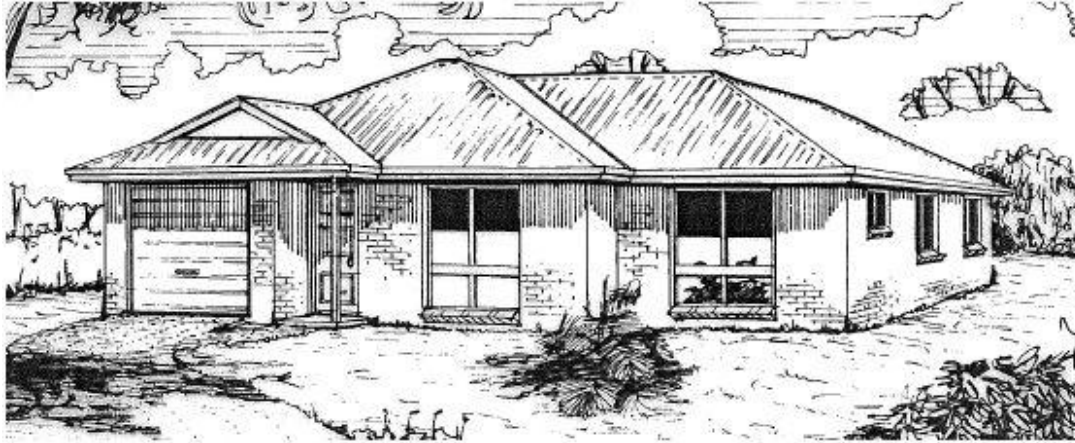


Here today. Here to stay.

The Brooke

Owner of the family business, Martin Fallon, has been building quality homes since 1975 on the Darling Downs, Southern Downs, Lockyer Valley, South Burnett, Brisbane Valley and parts of Western Queensland



\$

Artist's Impression Only

FLOOR AREA

Living	107.9m ²
Porch	1.5m ²
Garage	20.7m ²
TOTAL	130.1m² (14.0sq)

Standard "Gold" Inclusions:



- All fees, soil test, drafting etc.
- Foundations, (raft type), for "M" soil
- Stainless steel Termi-Mesh
- Wall studs at 450mm centres
- "6-Star" energy efficiency
- 10,000 litre rain water tank, pump (24,500 litre tank if no town water)
- Water meter, sewerage connection
- Colorbond roof, gutter and fascia
- Grey "Solarblock" tinted glass
- Air-conditioned living area
- Security screens to doors
- Fly screens to windows
- Clothes line and TV antenna
- Custom-made vanity units
- Ceramic cook top, multi-function oven
- Tile allowance - \$35 per sq m
- Moulded panel interior doors
- Rounded corners to interior walls

Copyright – Martin Fallon Family Homes.

M J Fallon Pty Ltd
ABN: 92 761 438 535. QBSA Lic: 20151
Office Ph: (07) 4669 7669

Plans, inclusions and prices are subject to variation without notice.